

 **MEDIUM**

Integrated machineroom  
in low part of the shaft

450/630 kg

COMPLETE LIFTS



SODIMAS (Société de Distribution de Matériel d'Ascenseur) was established as a family business in 1975, and has become France's foremost independent manufacturer of lift equipment. Today its products are distributed to around forty different countries throughout the world.

SODIMAS has developed and diversified its component sales business, and is now a designer, manufacturer and distributor of lift equipment. The company uses its know-how and expertise to manufacture complete lift systems for new buildings, replace older equipment, and modernise existing lifts while ensuring that all parts are compliant.

The company has an innovative research and development department, which is able to adapt to the most advanced technologies. All products are manufactured in France, either by the SODIMAS Group or under licence in partnership with major component manufacturers.

Through its technical sales team, its design office and its logistic department, SODIMAS has resolutely focused its strategy on customer service. Its teams are trained in lift equipment technology and current regulations, allowing them to offer advice and meet the specific needs of lift installers, architects and property developers...

## Why choose SODIMAS ?

---

- ↗ A company dedicated to innovation and technical expertise
- ↗ Thorough knowledge of applicable standards and legislation
- ↗ An independent strategy enabling reactivity and reliability over time
- ↗ Standard and non-standard products, offering an unlimited range of equipment
- ↗ Priority given to customer service and support

# MEDIUM by SODIMAS

The MEDIUM lift is easily integrated into new and existing buildings alike. This device is the perfect answer for residential and small office buildings and the successor to oil-hydraulic lifts.

It can be installed by attachment to a single wall. Its mechanical configuration is similar to that of hydraulic lifts, making it the ideal successor to these lifts.

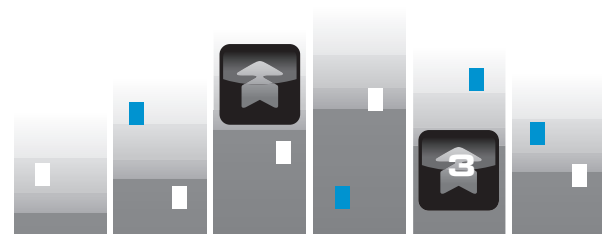
## The advantages of the MEDIUM lift

	<b>MEDIUM</b>	<b>Hydraulic</b>	<b>Without standard machine room</b>
Price	+	+	-
Assembly	+	+	+
Headroom mini	+	-	-
Consumption	+	-	+
Ecology	+	-	+
Machine room	+	-	+
Acoustic	+	-	-



The MEDIUM complies with the various standards and new legislation applicable to lifts :

- ✓ Lift Directive 95/16/CE
- ✓ 81-70 accessibility standard
- ✓ EN 81-1/2 standard + A3 amendment
- ✓ Eco-label following VDI4707
- ✓ Etc....



# MEDIUM

## Key figures

Load	450 / 630 kg
Nominal speed	0,6 m/s
Starting per hour	120
Rise maxi	18 m
Capacity	6 / 8 persons
Access	Single or double
Car area	1,31 / 1,66 m <sup>2</sup>
Power supply	Three phase 400 V + neutral
Doors	Automatics

## Lift with a headroom reduced to 2600 mm for new buildings

### The figures

#### ↗ 2600 mm

Headroom height in new or existing buildings (basic 3300 mm)

#### ↗ 350 mm

Minimum pit depth in existing buildings

#### ↗ 1000 mm

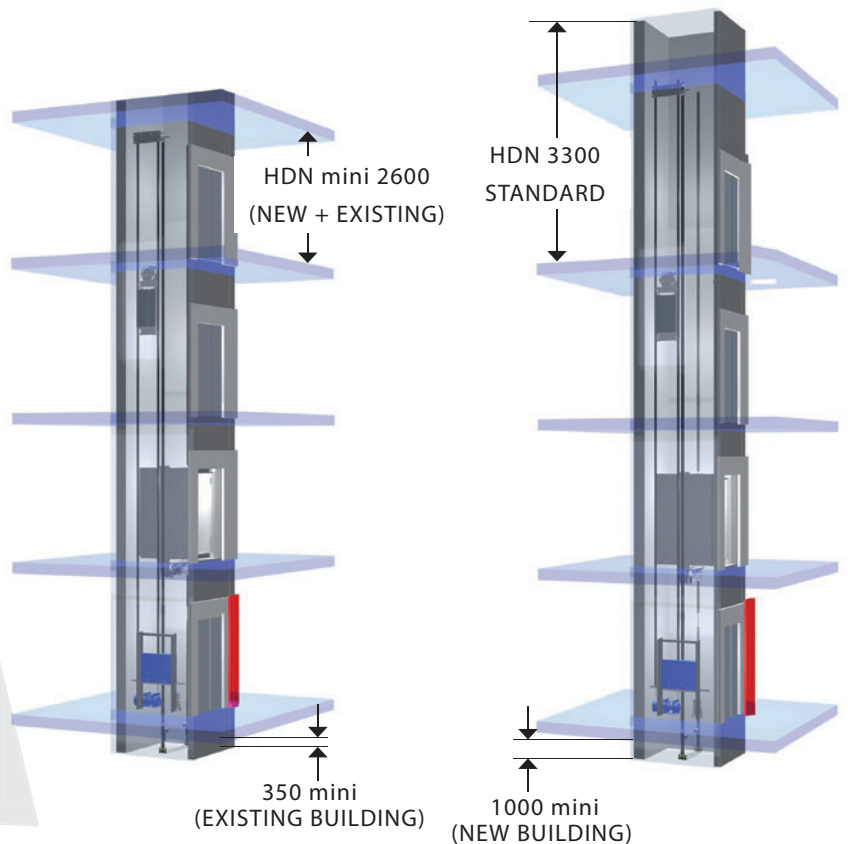
Minimum pit depth in new buildings

### Advantages

#### ↗ Easy to install

#### ↗ Perfect integration in your new or existing building

#### ↗ Shaft maintenance from inside the car (HDN 2600)



## A lift with machinery integrated into the base section

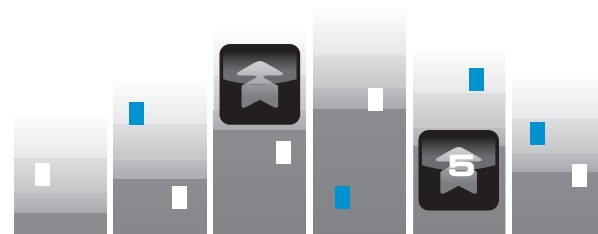
The technology used enables SODIMAS to offer you the ONLY device with machinery integrated into the bottom level.

### Advantages

#### ↗ Frame height: the only boxout necessary

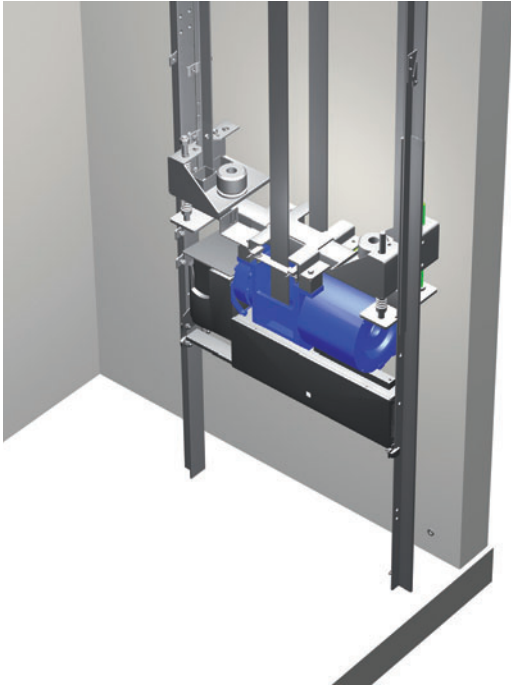
#### ↗ A single bearing wall

#### ↗ Flood protection in the pit



# A range of lifts bringing

A machine room installed on the lowest level



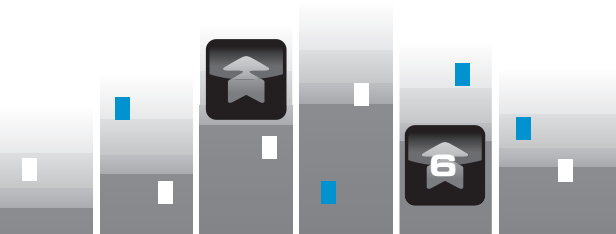
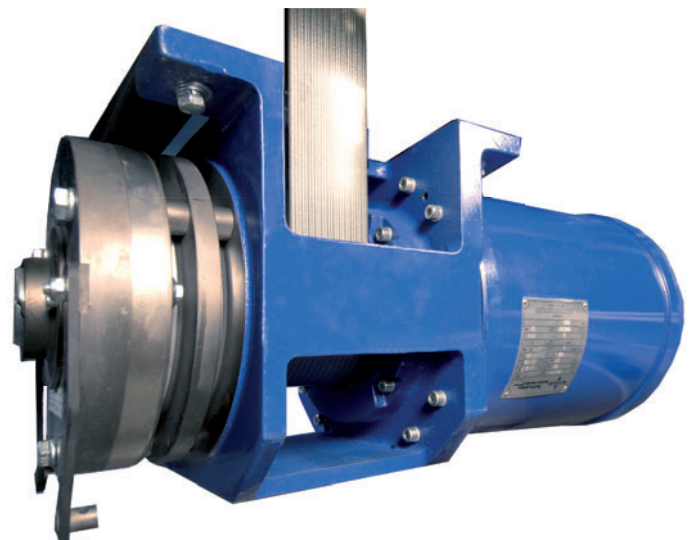
## Avantages

- ↗ Easy assembly
- ↗ Secure maintenance
- ↗ Easy servicing
- ↗ Improved acoustics
- ↗ Simplified power supply and telephone connections

A Gearless machine VM serie power : 3 kW

## Avantages

- ↗ High output, low consumption
- ↗ Eliminates noise disturbance
- ↗ Low energy consumption
- ↗ Small and compact machine room
- ↗ Comfort and stop accuracy

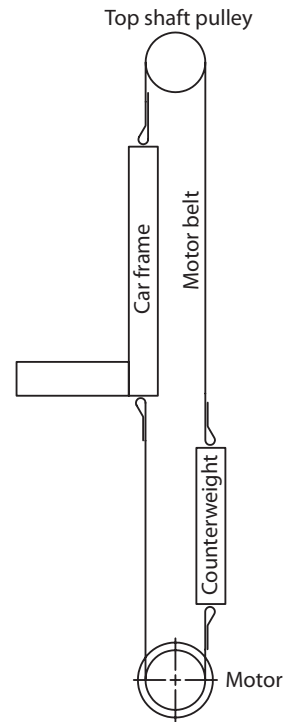


# new technologies together

## A flat belt in polyurethane replace ropes

### Avantages

- ↗ **Maximum output of the power**
- ↗ **Comfort in car improved, noise disturbances eliminated**
- ↗ **Perfect line in time : longer lifetime of your product**



## A new electrical solution for lift systems : NG240 controller

### Advantages

- ↗ **Upgradable and flexible**  
Flexible and simple installation and maintenance thanks to combined wired/CANbus CANopen transmission
- ↗ **Energy consumption optimised** by its sleep mode system
- ↗ **Communicating technology**  
Microprocessor provided with a mini web server: traceability of functions and operations.
- ↗ **Open technology** accessible to any professional
- ↗ **Innovative technology**  
With its absolute position selection, it manages much reduced distances between levels (30 mm)

# Eco performance



## 1 - The car

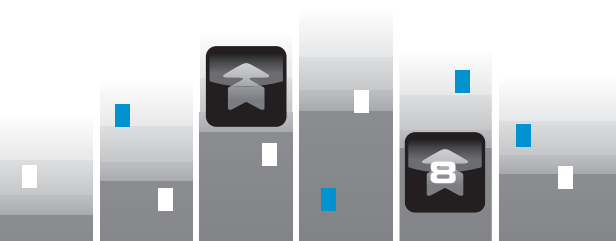
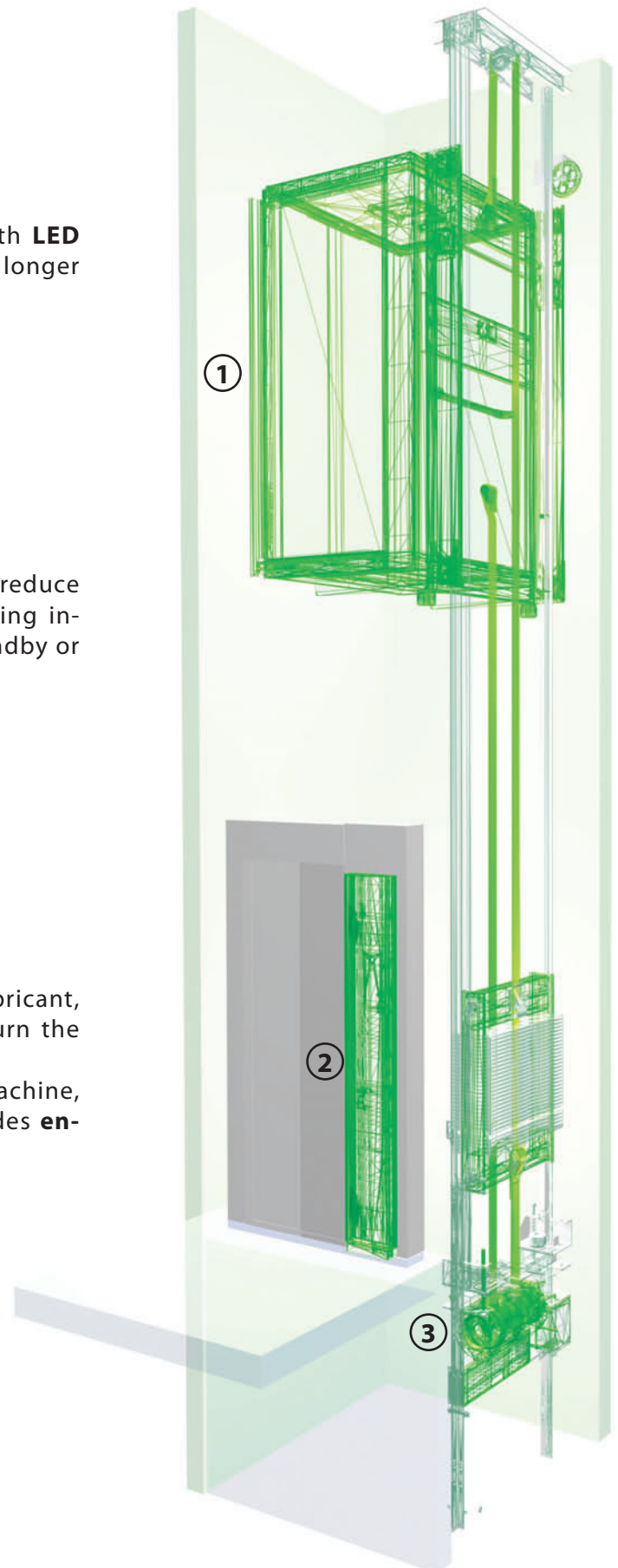
All lift cars in the SODIMAS range are fitted with **LED lights**, which are less energy-hungry and have a longer service life.

## 2 - Controller

The intelligent SODIMAS technologies (NG240) reduce energy consumption by **switching off** the landing indicators and lift car lights when the lift is on standby or has stopped. These functions are reactivated immediately.

## 3 - GEARLESS machine

First, gearless traction machines do not use lubricant, as permanently greased bearings are used to turn the drive pulley. Second, the combination of a gearless traction machine, a synchronous motor and a VVVF inverter provides **energy savings of around 50%**.



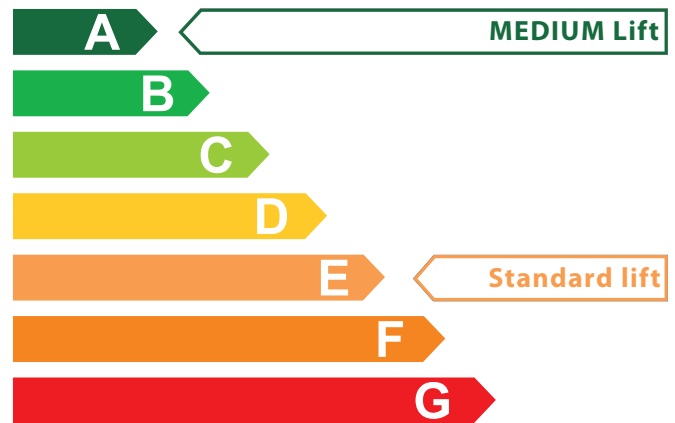
## Proven energy savings

SODIMAS products, particularly those in the MEDIUM range, have been awarded an excellent energy saving classification, (based on the German standards establishing the VDI4707 guidelines).

This classification takes different criteria into account, such as a lift's load, speed and frequency of use, to judge its energy efficiency.

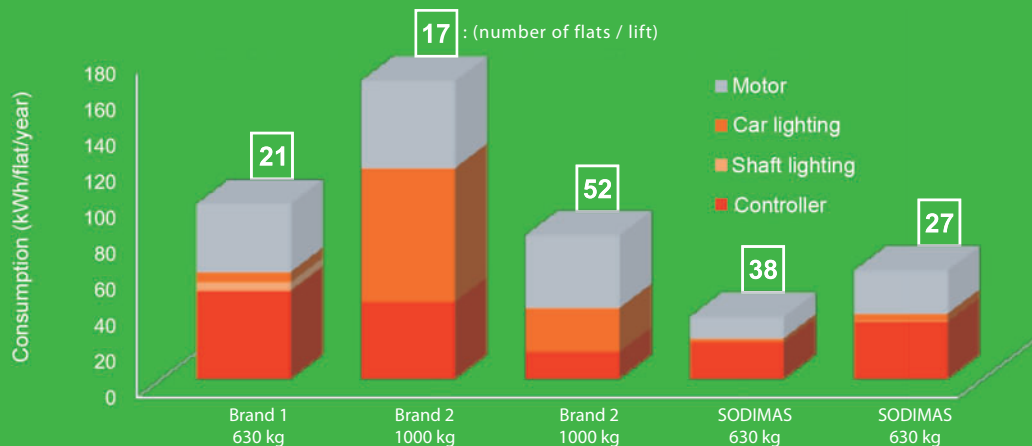
The MEDIUM is in A classification, reflecting its very low energy consumption.

Another study carried out in Grenoble on new, high environmental quality buildings, has confirmed the high energy performance of SODIMAS' lift systems : See box below.



Classified based on VDI4707 guidelines

### Consumption of lift per flat



“ We note, [...], that the two lifts to consume the least are of the Sodimas make. This company based in Pont de l'Isère in the Drôme is not one of the sector's leading four companies. It has nonetheless developed original technologies (replacing the reducers with cable and pulley systems), which are perhaps also the most efficient, which it will be up to other audits to confirm. ”

# Offering you choice

**False ceiling** white epoxy finish

**Lighting** by 4 LEDs spots (4W)  
high efficiency  
Integrated emergency light

Natural tone **mirror**

- Half height  
Full width at car rear side  
for single access

Width 80 cm at opposite side of COP  
for through access

**Handrails** complies with 81-70 standard  
Stainless steel finish aspect

**Sill**

Natural anodized aluminium

**Skirtings**

Stainless steel finish aspect

**Entrance return and panels**

in polished stainless steel

**Laminated panels**

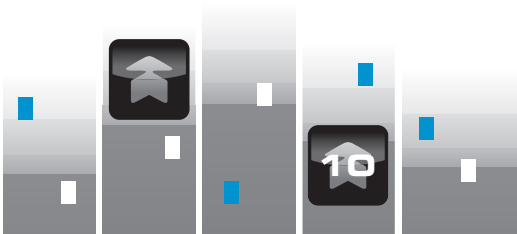
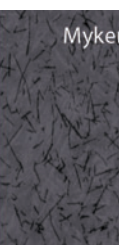
High pressure aminated panels,  
6 mm thickness



**ODEON**  
environment



**Floor coverings**  
PVC (U4, P3, M3)  
or 25 mm recessing





## VENDOME environment

### Full height operating panel in brushed stainless steel

- ↗ Angel EVOLYA micro switch push buttons (according to the 81.70 standard)
- ↗ 6" LCD level indicator with voice announcer
- ↗ Backlit logo and load plate (LEDs)
- ↗ Three-phonc uninterruptible telealarm (comply with EN81-28)
- ↗ Integrated keypad access



### False ceiling

Black or white decorative

### Fluorescent lighting

Integrated emergency light

### Full height mirror

ton naturel  
30 cm from floor, width 80 cm

### Handrails

complies with 81-70  
Stainless steel finish aspect

### Sill

Natural anodized aluminium

### Skirtings

Stainless steel finish aspect

### Entrance return and panels

in polished stainless steel

### Panels

Laminated panels  
or natural essences in Print range  
(including the 9 colours see in Odeon range)

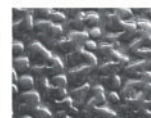


### Stainless steel panels

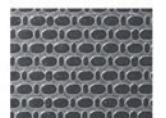
Stainless steel panels high resistance



Polished stainless steel



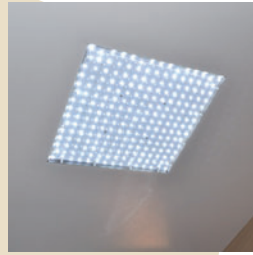
Engraved stainless steel



Lino stainless steel

*Only the basic available components are shown here.  
Many other options are available. Please contact us.*

# SQUARE environment



**Ceiling**  
White epoxy finish

**Lighting**  
with a LED panel  
integrated emergency light

**16/9° mirror** natural tone

**Handrails**  
complies with 81-70 standard

**Sill and skirtings,**  
natural anodized aluminium

**Entrance and panels**  
in polished stainless steel

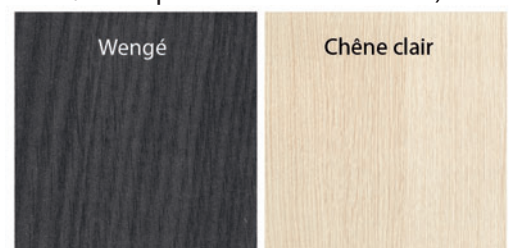
**Floor covering**  
PVC (U2S,P2)  
or 25 mm recessing

**Panels**  
Stratified panel  
Choice :

- **Plain** : For Walnut and Erable



- **Two-coloured** : Light Oak/ Wenge  
(side panel / rear panel and vice-versa)



## Half height operating panel in polished stainless steel

- ↗ Angel EVOLYA micro switch buttons  
(according to the 81.70 standard)
- ↗ 4" LCD level indicator  
with voice announcer
- ↗ Backlit logo and load plate (LEDs)
- ↗ Three-phonc uninterruptible telealarm  
(comply with EN81-28)
- ↗ Integrated keypad access

**Available options for the MEDIUM range (please contact us) :**

- ↗ Internal or external **glass or metal covered tower**, epoxy finish
- ↗ **Glass lift cars and doors** for a wide-angle view
- ↗ **Emergency landing device :**  
Controller for automatic evacuation in the event of a power failure
- ↗ **GSM phone :**  
Quadband, integrated battery
- ↗ **7-inch colour multimedia indicator screen**

**Our high-quality service**



- ↗ Permanent support : our design office, sales team, after-sales service and training staff are all available to help you



- ↗ As an SME in a favourable geographical location, SODIMAS is always available to respond to your needs.
- ↗ SODIMAS also guarantees the permanent availability of its equipment, thanks in particular to its large stock of products



- ↗ An online customer space providing a set of services for your own use



# www.SODIMAS®.com



FABRICATION FRANÇAISE

**Siège social / Head office**

11 rue Ampère  
26600 Pont de l'Isère  
FRANCE

☎ +33(0)4 75 84 86 00

☎ +33(0)4 75 84 67 30

e-mail : [accueil@sodimas.fr](mailto:accueil@sodimas.fr)

**27 000 012 UK**

**UK**

